



BEDROOMS AND LAYOUT OF RIVER VALLEY HOUSE, DORSET

River Valley House is nestled in a beautiful valley just outside the Dorset seaside town of Bridport. Set in 14 acres, the house offers elegant accommodation for up to 20 people. Here is a list of all the main rooms available for you to enjoy:

LIVING & ENTERTAINMENT SPACES

Sitting Room: rich with bespoke fabrics and wallpaper, two impressive fireplaces and set out to facilitate convivial conversation.

Study: perfect for a bit of quiet time. Curl up with a good book!

Kitchen and dining room: the heart of the house. This open plan kitchen and dining area is the social hub. Get together for big special meals! Cook yourself or hire in a private chef to do all the hard work for you.

Back hall and kitchen: The perfect place for preparation.

Gym: well equipped with professional Life Fitness equipment. The equipment includes, treadmill, exercise bike, x-trainer, multi-gym, free weights, kettle bells and medicine balls.
Indoor swimming pool:

Indoor Heated Swimming Pool: measuring 10m by 5m and is heated like the rest of the house by a combination of wood (from the grounds), air and sun. The infinity edge overlooks the kitchen garden and the hills that frame the River Valley House view. There is also an 8-person steam room.

Conference centre/Media Room: The Barn attached to the Pool and Gym has been converted to provide facilities for a small conference or away day retreat. There is a fully connected 60 inch plasma, Sonos music system, a soft seating area and a boardroom table with seating for up to 16 people.

IN THE GROUNDS

Natural swimming pool: Fed by a natural spring, swimming here, surrounded by nature, is a real treat! There are three access points...a little 'beach', a jetty and a diving rock and carved into the hill below the pool is a changing room and shower.

Kitchen garden: with pizzeria oven and BBQ and amazing vegetable and fruit gardens where you are welcome to pick your own (when in season). There are also garden hens (collect your own eggs).

Tee Pee Island: Down by the river you'll find an area for kids to explore and make camp...there's a Tee Pee on the island (an ox bow lake for those that remember their Geography lessons), and rope bridges, swings and trampolines as well as a camp fire area under cover of a parachute suspended from the trees.



BEDROOMS – sleeps 16-20 in 10 bedrooms

● indicates a choice of bed configuration

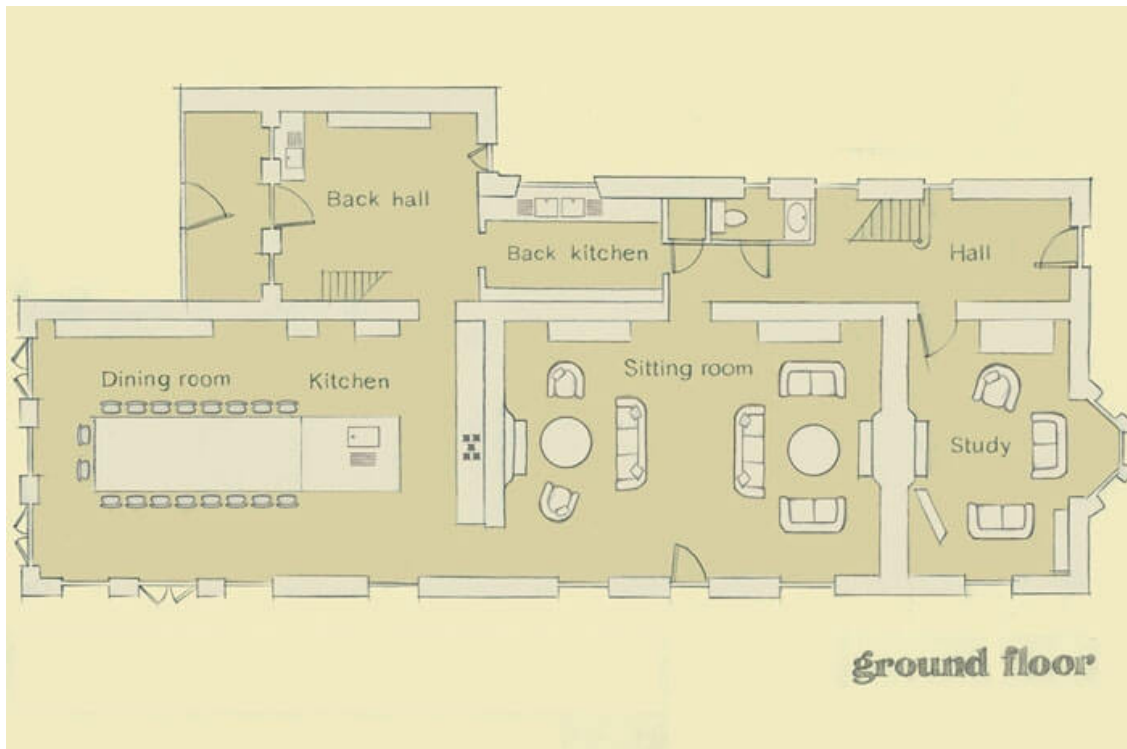
Bedroom	Beds	Sleeps	Features
Bedroom 1	Super-King bed	2	En-suite with a bath
Bedroom 2	King bed	2	En-suite.
Bedroom 3	Twin beds	2	En-suite.
Bedroom 4	King bed	2	En-suite.
Bedroom 5	King bed	2	En-suite.
Bedroom 6	King bed	2	Private bathroom.
Bedroom 7 (Apartment)	King bed	2	En-suite (shared with Bedroom 8). Stairs leading to Bedroom 8.
Bedroom 8 (Apartment)	Twin beds	2	Shared en-suite bathroom with Bedroom 7.
Bedroom 9 (Pool Barn)	King bed	2	En-suite.
Bedroom 10 (Pool Barn)	Double ● can be divided into two single beds	2 -4	En-suite.
Total		20	

Overall capacity:

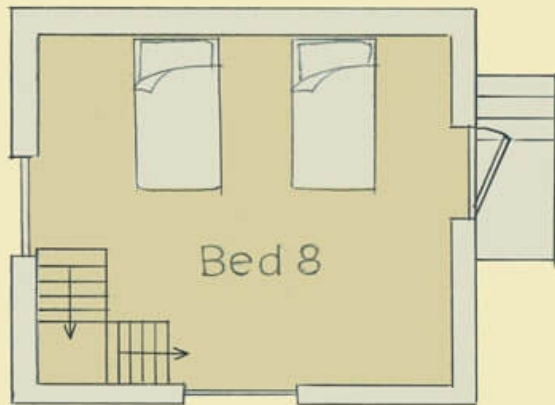
- If each guest wants a private bedroom, the total capacity is 10.
- If each guest would like their own bed, the total capacity is 13.



FLOOR PLANS



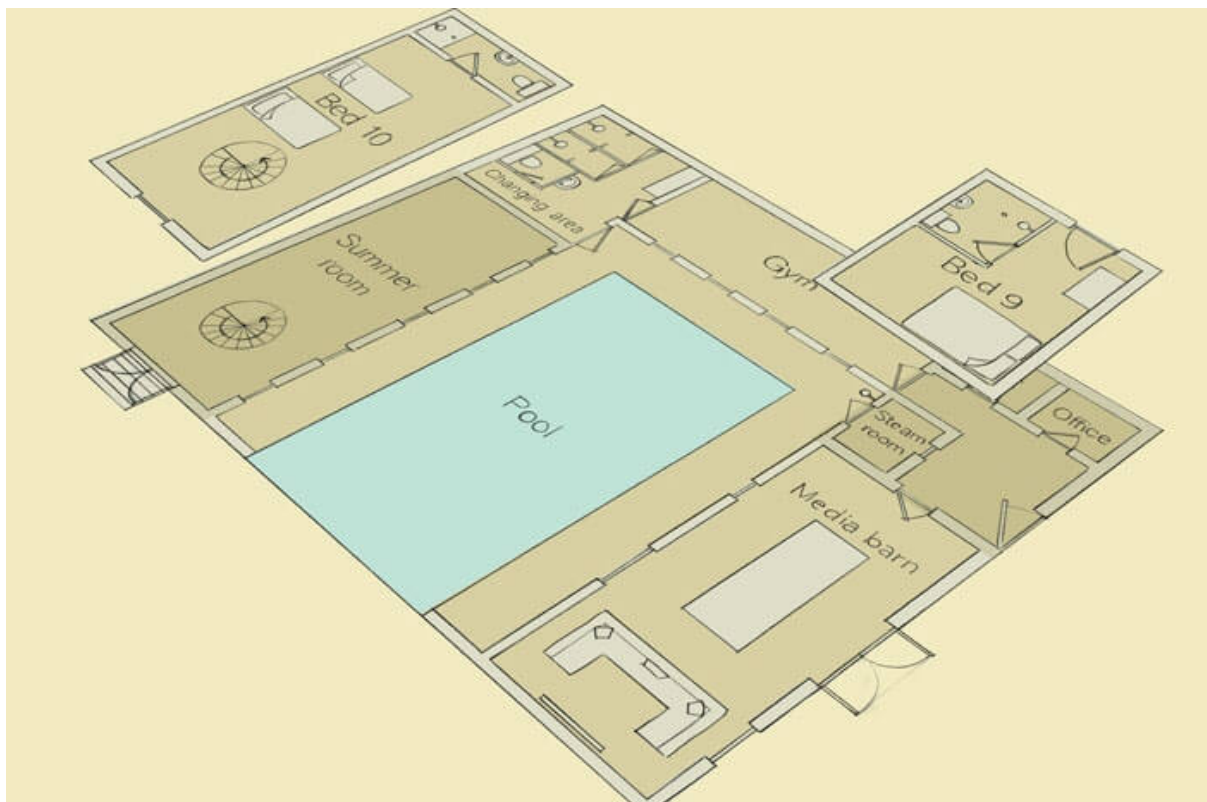
BIG HOUSE EXPERIENCE



Apartment groundfloor



Apartment first floor



BIG HOUSE EXPERIENCE

